

DAEHAN


ROTATING & FIXED MULTI GRAPPLES

Strength Precision Versatility

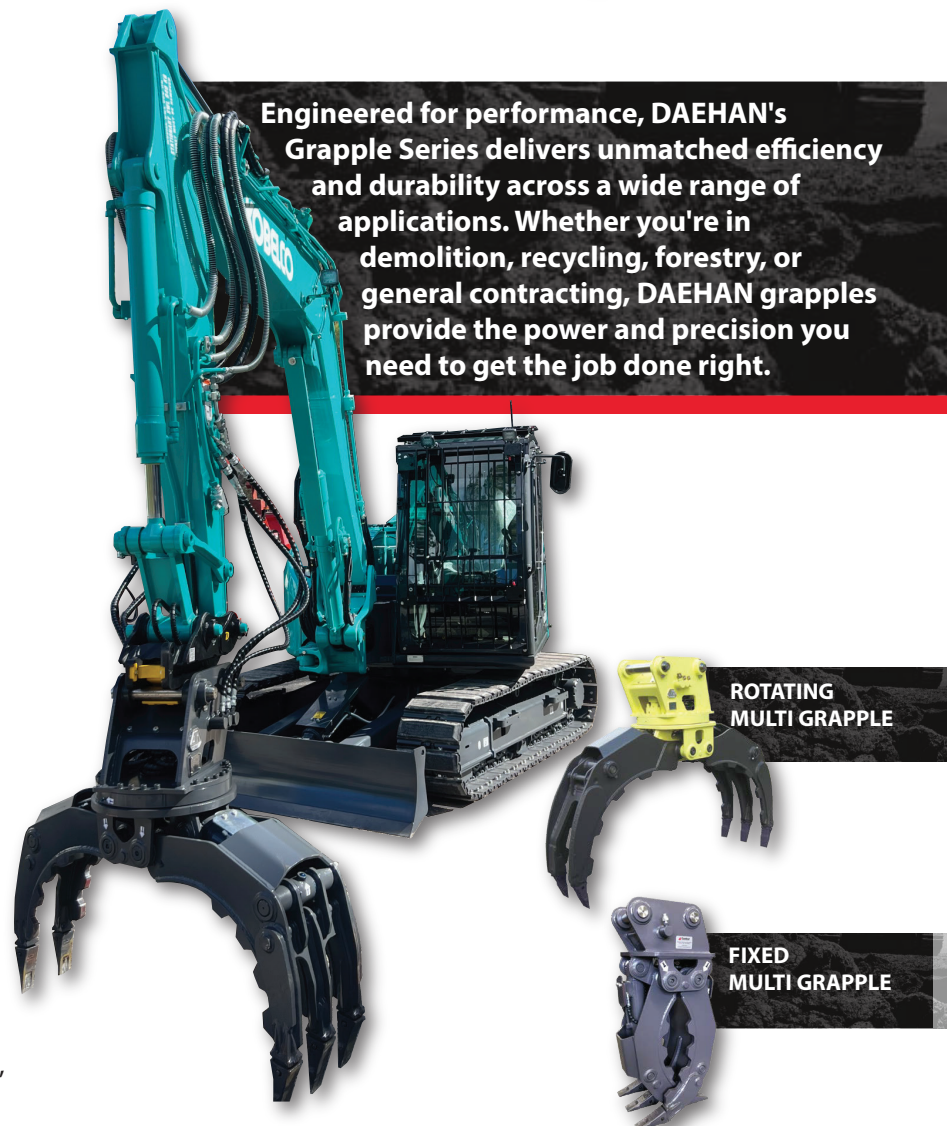
Versatility you can rely on: From forestry & landscaping to demolition & recycling, contractors trust DAEHAN for powerful, reliable, & adaptable grapple solutions tailored to every job.

KEY FEATURES

- ✓ **360° Continuous Rotation**
Unlimited clockwise and counter-clockwise rotation allows for ultimate flexibility and control.
- ✓ **Adjustable Rotating Speed**
Operator can fine-tune rotation speed for precision handling.
- ✓ **Fixed Grapple Option Available**
Non-rotating models available to suit various work requirements.
- ✓ **Built-In Oil Flow Control & Motor Protection**
Ensures optimal performance and longevity of the hydraulic system.
- ✓ **Enclosed Check Valve for Safety**
Prevents unintentional opening or closing, enhancing job site safety.
- ✓ **High-Capacity Hydraulic Cylinder**
Specially designed for maximum gripping force and operational power.
- ✓ **Durable Swing Bearing**
Engineered for longevity under high-load conditions.
- ✓ **Wide Compatibility**
Designed for excavators ranging from 2 tonnes to over 50 tonnes.
- ✓ **Wear-Resistant Construction**
Made from high-strength steel with no additional reinforcement needed.
- ✓ **Multi-Application Design**
Ideal for removing vegetation, handling scrap metal, construction debris, waste paper, garbage & more.



Engineered for performance, DAEHAN's Grapple Series delivers unmatched efficiency and durability across a wide range of applications. Whether you're in demolition, recycling, forestry, or general contracting, DAEHAN grapples provide the power and precision you need to get the job done right.



GARDNER ENGINEERING AUSTRALIA
7 Babdoyle Street, Loganholme, QLD 4129

PHONE: (07) 3801 3855
EMAIL: sales@gardnerengineering.com.au
WEB: earthmastergrapples.com.au
WEB: gardnerengineering.com.au